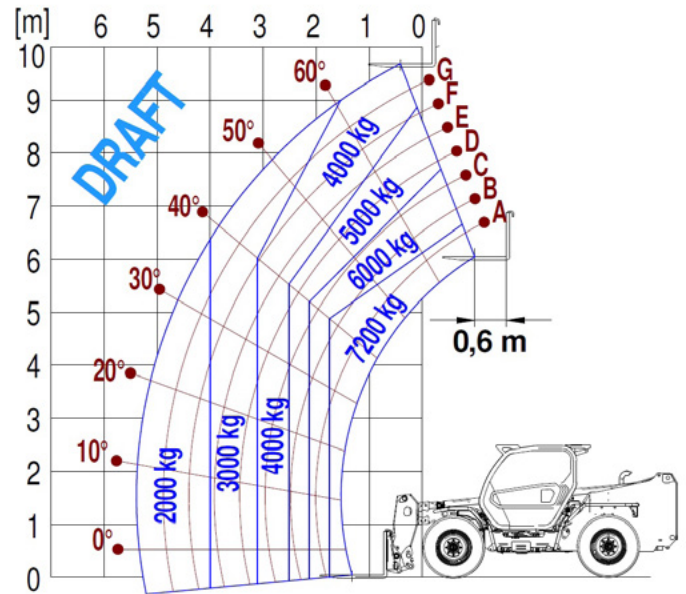




PANORAMIC P72.10 Plus



| PERFORMANCE AND FEATURES                 | P72.10 Plus                 |  |  |
|--|-----------------------------|--|--|
| <b>PERFORMANCE</b>                       |                             |  |  |
| Total unladen weight (kg)                | 10950                       |  |  |
| Maximum capacity (kg)                    | 7200                        |  |  |
| Lifting height (m)                       | 9,6                         |  |  |
| Maximum reach (m)                        | 4,7                         |  |  |
| Maximum operating height (m)             | 6,8                         |  |  |
| Maximum operating reach (m)              | 1,8                         |  |  |
| Capacity at maximum height (kg)          | 4000                        |  |  |
| Capacity at maximum reach (kg)           | 2000                        |  |  |
| Lateral boom movement (mm)               | +/- 250                     |  |  |
| Tilting correction (%)                   | +/- 10                      |  |  |
| Boom sections                            | 2                           |  |  |
| <b>POWERTRAIN</b>                        |                             |  |  |
| Turbo motor                              | Deutz TCD3.6                |  |  |
| Displacement/cylinders                   | 3600/4                      |  |  |
| Engine Power (kW/HP)                     | 75/102                      |  |  |
| Anti-pollution technology                | EURO IV, SCR+DOC            |  |  |
| Reversible fan                           | -                           |  |  |
| Maximum speed (km/h)                     | 40                          |  |  |
| Fuel tank (l)                            | 140                         |  |  |
| AdBlue tank (l)                          | 18                          |  |  |
| Hydrostatic transmission                 | ● - 2V                      |  |  |
| EPD                                      | ●                           |  |  |
| Axles                                    | Drop portal                 |  |  |
| Reduction hub                            | RR700                       |  |  |
| Machine brakes                           | Dry discs                   |  |  |
| Automatic parking brake                  | ●                           |  |  |
| <b>HYDRAULIC</b>                         |                             |  |  |
| Hydraulic pump                           | LS + FS                     |  |  |
| Flow rate/pressure (l/min – bar)         | 105 - 250                   |  |  |
| Hydraulic tank                           | 117                         |  |  |
| Hydraulic outlet at the top of the boom  | ●                           |  |  |
| Rear hydraulic outlets                   | ○                           |  |  |
| <b>CAB</b>                               |                             |  |  |
| Cab configuration                        | PLUS                        |  |  |
| MCDC                                     | FULL+MONITOR 10"            |  |  |
| FOPS LIV II cab                          | ●                           |  |  |
| ROPS cab                                 | ●                           |  |  |
| Cab commands                             | Electronic joystick control |  |  |
| Tilting Cab                              | -                           |  |  |
| Reverse shuttle                          | Dual reverse                |  |  |
| <b>CONFIGURATION</b>                     |                             |  |  |
| Cab suspension                           | -                           |  |  |
| Boom suspension                          | ○                           |  |  |
| Suspension on axles                      | -                           |  |  |
| Work headlights on cab                   | ○                           |  |  |
| Sun blind                                | ○                           |  |  |
| Tac-lock                                 | ●                           |  |  |
| Provision for a platform                 | ○                           |  |  |
| Two floating forks                       | ●                           |  |  |
| Inching-Control                          | ●                           |  |  |
| Four-wheel drive                         | ●                           |  |  |
| Four-wheel steering                      | ●                           |  |  |
| Three steering modes                     | ●                           |  |  |
| Standard tyres                           | 400/70-24                   |  |  |
| Optional tyres                           | 18-22,5                     |  |  |
| Stabilisers                              | -                           |  |  |
| Turret rotation                          | -                           |  |  |
| Type approval as an agricultural tractor | -                           |  |  |
| Approval with PNEUMATIC braking          | -                           |  |  |
| Approval with HYDRAULIC braking          | -                           |  |  |
| PTO                                      | -                           |  |  |
| 3-point linkage                          | -                           |  |  |
| <b>DIMENSION</b>                         |                             |  |  |
| Width (mm)                               | 2240                        |  |  |
| Height (mm)                              | 2500                        |  |  |
| Length (mm)                              | 5480                        |  |  |
| Wheelbase (mm)                           | 2920                        |  |  |



P72.10

## GLOSSAR

## SCR

**Selective Catalyst Reduction**, solution used for the reduction of NOx in the exhaust gases through the injection of a liquid - UREA (AdBlue) - into the exhaust gases.

## DPF

**Diesel Particulate Filter**, a solution used to reduce fine particle emissions in exhaust gases

## DOC

**Diesel Oxidation Catalyst**, a solution used to reduce carbon monoxide (CO) and hydrocarbons in exhaust gases

## EGR

**Exhaust Gas Recirculation**, a solution used to reduce NOx in exhaust gases by recirculating gas inside the combustion chamber of the engine.

## 1-2V

1 or 2 speed **Merlo gearbox**

## CVTronic

**Continuous variation Merlo gearbox**, for constant acceleration without loss of torque

## EPD

**Eco Power Drive**, Merlo electronically-controlled hydrostatic transmission Electronic, enables effective RPM management in order to reduce overall fuel consumption by the machine

## EPD Plus

In addition to the **EPD** Control, it is also possible to work using Speed Control (maintaining a constant travel speed) and Heavy Load (management of RPM in order to maximise performance for tasks such as: bucketing operations, heavy duty unloading, etc.)

## EPD Top

In addition to the **EPD Plus** control function, this enables the RPM to be managed directly using the joystick

## Gear

**Fixed displacement pump with gears**, combined with an open centre hydraulic distributor

## LS

Variable displacement pump with **Load Sensing** control, combined with a closed centre hydraulic distributor

## LS+FS

Variable displacement pump with **Load Sensing** control, combined with a closed centre hydraulic distributor equipped with solenoid valves and **Flow Sharing** control.

## Kabine ECO/PREMIUM

**MODULAR** type cabin with simplified or PREMIUM equipment

## MCDC

Merlo Dynamic Load Control, electronic control of the machine's anti-overflow system.

• **Light**: Simplified version; • **Complete**: Version with display in cab.

## FOPS

Falling object protective structure, the system which shields the operator from heavy objects falling onto the cab. Two levels: • **FOPS Liv I**: Object with a weight of 45 kg falling from 3 metres • **FOPS Liv II**: Object with a weight of 227 kg falling from 5.2 metres

## ROPS

**Roll-over protection system** (or roll-over protection structure), the system that protects the operator if the vehicle rolls over

## Finger Touch

Driving direction inversion system mounted on the steering column

## Dual Reverse

Dual driving direction inversion system, on both the steering column and the joystick

## Tac-lock

Hydraulic attachment clamping system controlled from the cab



**MERLO S.P.A.**

Via Nazionale, 9  
12010 S. Defendente di Cervasca  
(Cuneo) Italia

Tel. +39 0171 614111

Fax +39 0171 684101

[info@merlo.com](mailto:info@merlo.com)

[www.merlo.com](http://www.merlo.com)



DS\_P7210\_0418\_XG